



# Building Best Practices for Cash Handling – a success story of the German Cash Community

ESTA Business Conference  
Berlin | 01.06.2015  
GS1 Germany

# A language that everyone understand



Standards are the foundation for clear, understandable exchanges between companies.



Standards help keep costs down for everyone.

## Who is GS1?



**The most well-known and universally recognizable GS1 standard.**

Businesses and organizations around the world use them to **automatically identify products, pallets and places**, and manage their supply chains more efficiently.

# Global reach, local presence



■ Countries with a  
GS1 Member  
Organisation

■ Countries served on a  
direct basis from GS1  
Global Office (Brussels)

**111 Member Organisations.**  
**150 countries served.**  
**2,000 people helping us.**  
**2 Mio Customers in various Industries**



# The Experience of CashEDI launched 2007 in Germany

---



## Efficiency

- ▶ Speed-up of cash handling process
- ▶ Massive reduction of handling errors
- ▶ Reduced volume of paper by dispensing with the need for pay-in slips

- 
- ▶ Safe!
  - ▶ Efficient!
  - ▶ Transparent!

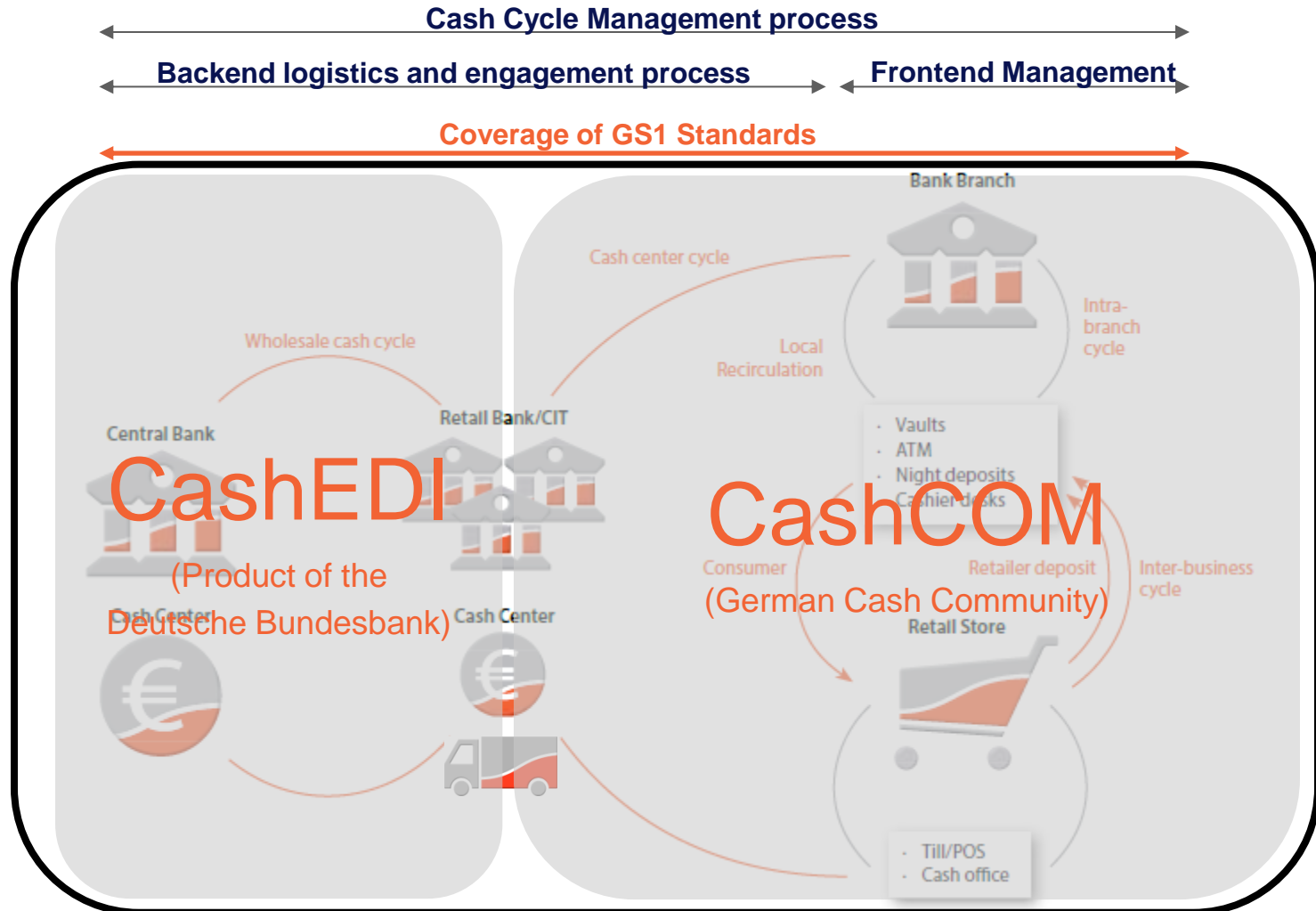
## Transparency

- ▶ Real-time traceability of cash containers

## Security

- ▶ Cash flow and information = separated
- ▶ Electronic transfer of data reduces risk of manipulation
- ▶ No breaks in media increase the quality of your data

# Our Vision: end-to-end Cash Handling processes

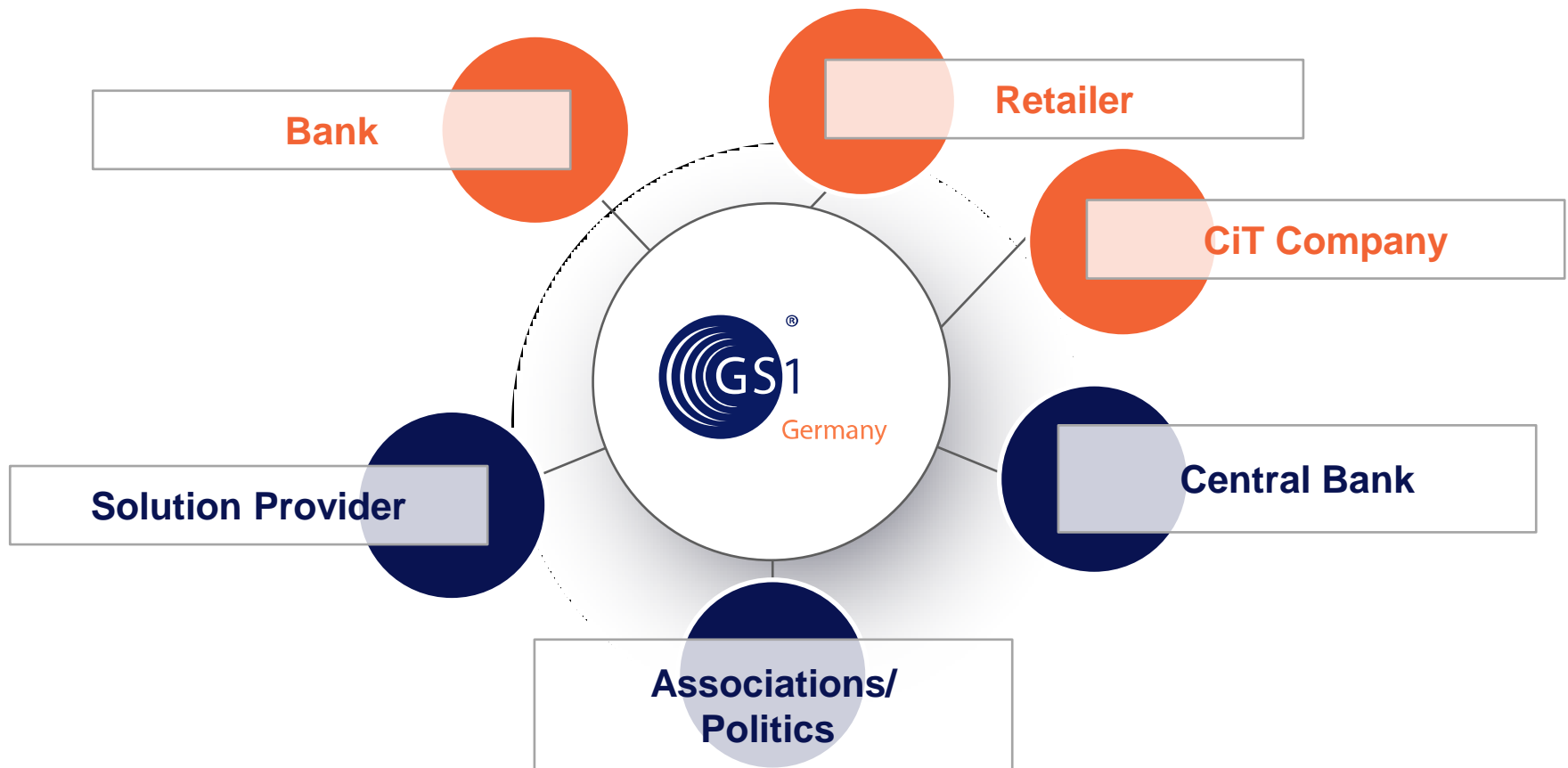




# Our Mission: Together we can change it!



# Launch of CashCOM (Cash Community) in 2012

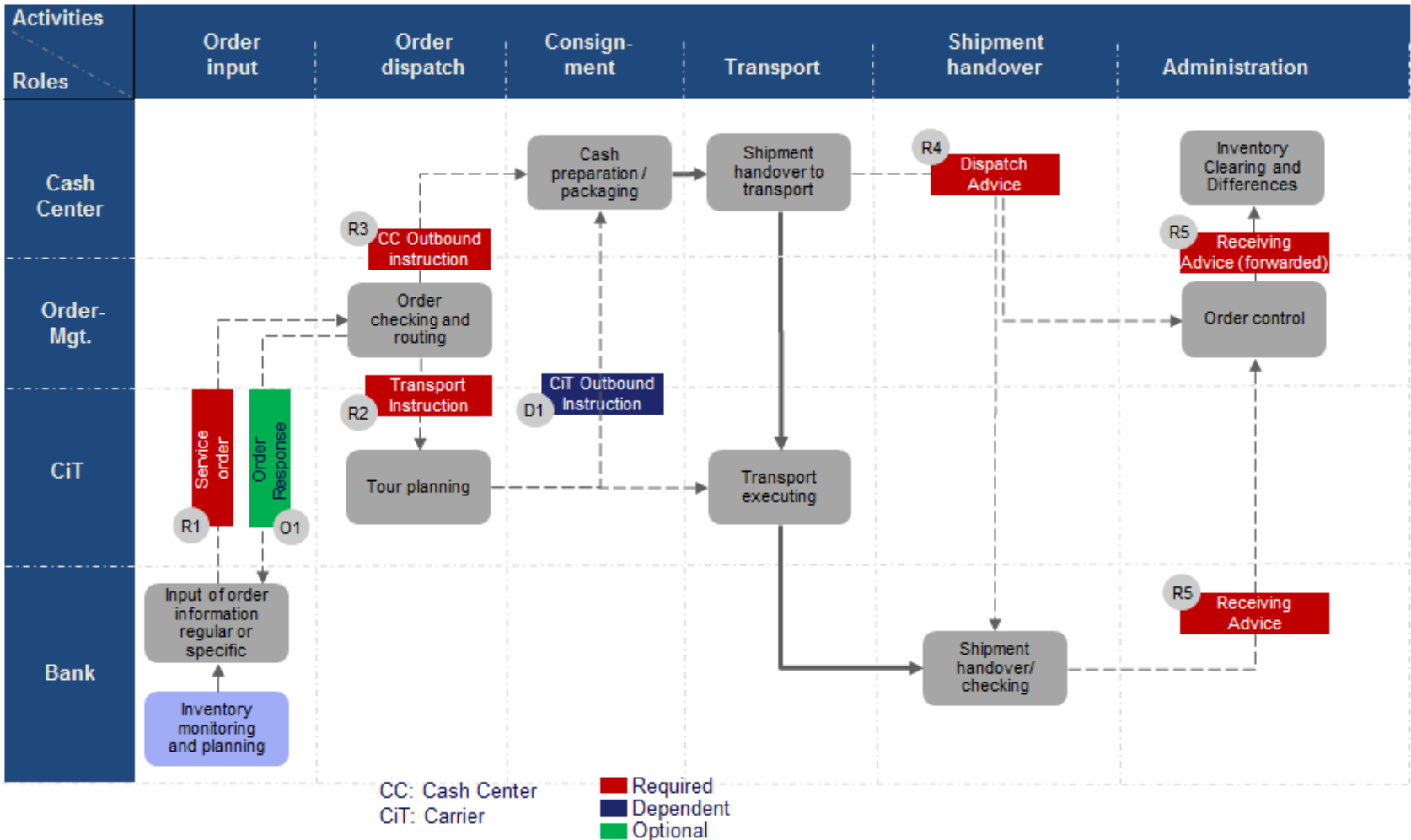


CashCOM an open platform to optimize cash cycle E2E with more than 50 members.



# CashCOM results - a collective understanding

## Process 1: Cash delivery to branches



# CashCOM Results - up-to-date overview

## 1 Holistic process model for international cash cycle management

- Based on best practices
- Capable for adaptation to country specifics

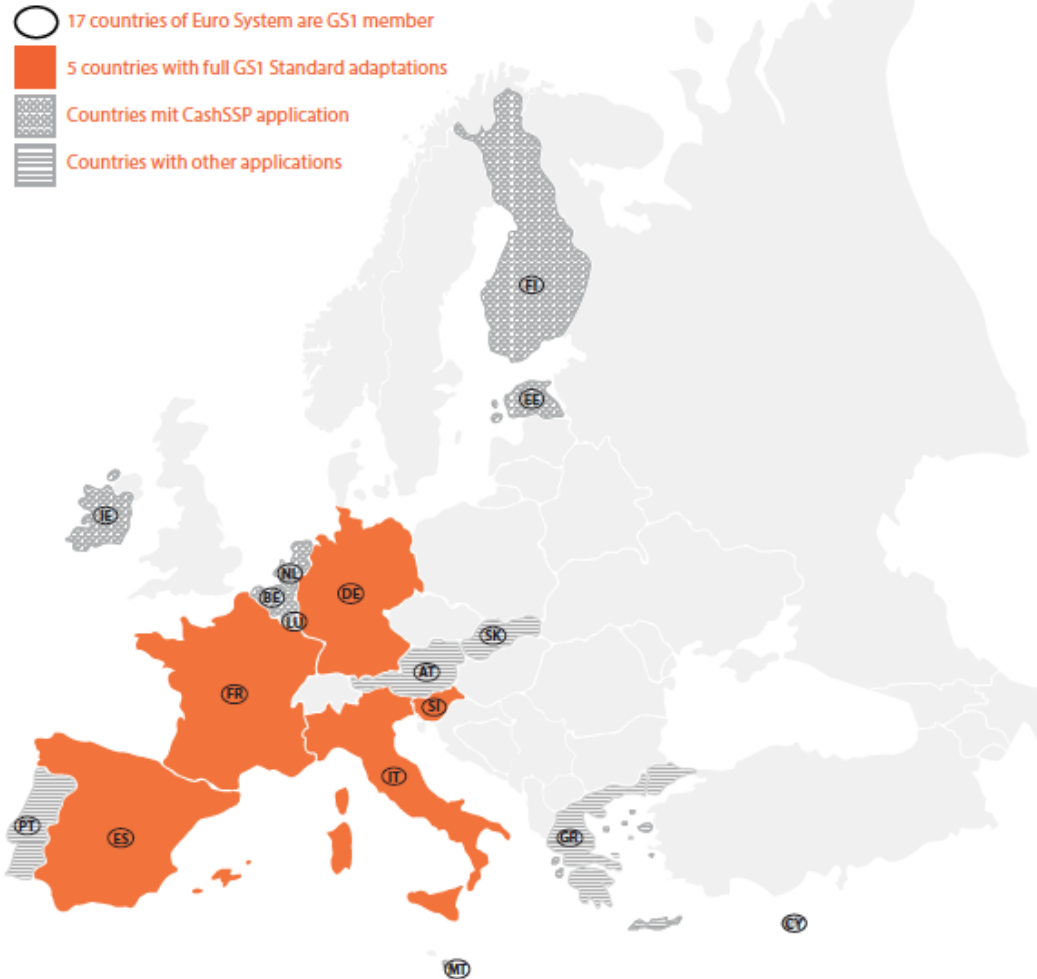
## 2 Completed data models for major business processes

- Based on common GS1 identifiers and data carries
- Open for new/ next technologies, e.g. EPC/ RFID

## 3 EDI communication with newest GS1 XML Standards 3.2

- Defined standards for interoperability for E2E cash management
- Approved by GS1 steering committees

# GS1 Standards adapted in EUR Zone



## Benchmarks

### GLN coverage in Germany

- 85% of banks (1,450 of 1,760)
- ~ 100% of retailers
- 100% of CiTs

### CashEDI with Bundesbank

- 99% of cash volume (in/ out)

### Similar EDI communication according to GS1 Standards for

- France: Interop
- Spain: CDI
- Italy: bank.it

### ECB framework

- harmonized articles for EUR
- GS1 Standards for cross- border bulk transfers

Status 10/2013

# Where do you find support?

General agreement to GS1 solution provider program for (intern'l) technology  
(status May 2015)

- |                               |   |                          |   |
|-------------------------------|---|--------------------------|---|
| ○ Alvara (DE)                 |    | ○ NCR (US)               |    |
| ○ Debatin (DE)                |    | ○ Orfix (DE)             |    |
| ○ EECC (RFID lap in DE)       |    | ○ Planfocus (DE)         |    |
| ○ Giesecke & Devrient (DE)    |    | ○ Scan Coin (SE)         |    |
| ○ Glory (JP)                  |    | ○ SQS (SE)               |    |
| ○ Gunnebo (SE)                |    | ○ Transtrack (NL)        |    |
| ○ Hess (DE)                   |  | ○ Villiger Security (CH) |  |
| ○ Insys Mircoelectronics (DE) |  | ○ Wincor Nixdorf (DE)    |  |
| ○ IT Kompetenz (DE)           |  |                          |   |
| ○ Lock your World (DE)        |  |                          |   |

(remark: country of solution provider's headquarter)

# Believe me – it's only a Standard not cold water...



# Thank you for your interest!







# Contact details

Christian Fischer

GS1 Germany

Industry Engagement Cash Logistics

Tel.: + 49 221 94714-443

E-Mail: [fischer@gs1-germany.de](mailto:fischer@gs1-germany.de)

GS1 in Europe

Project leader (GS1 Standards for Cash Handling)